

METRO

COVID-19 warning issued for La

Prisma doctor urges use of masks to prevent spike

Kirk Brown Greenville News
USA TODAY NETWORK – SOUTH CAROLINA

A Prisma Health System physician urged South Carolina residents Wednesday to wear masks and avoid large gatherings on Labor Day weekend to prevent a spike in COVID-19.

Dr. Steve Shelton, an emergency department physician and one of the leaders of Prisma Health's COVID-19 response, said South Carolina saw peaks in COVID-19 cases after the Memorial Day and Fourth of July holidays.

"So we are concerned about Labor Day," Shelton said during a video call

with reporters.

"We are seeing our COVID numbers going down, and we'd like to see them continue in that direction," he said.

According to Shelton, Prisma Health is currently caring for 110 hospitalized COVID-19 patients, down from 150 last week.

Shelton said he's aware that many people are tired of hearing about CO-

VID-19

"It and th with it he said now; battlin sure w

See W



The BMW CCA Foundation Museum has unveiled a new exhibit called "Genesis: BMW from the beginning," at the BMW Car Club of America in Greer on Aug. 26. PHOTOS BY TIM KIMZEY

WORKS OF ART

A
e
g
i
a

Hale
USA T

Th
30-d
Cour
enter
to co
A
Gene
tome
umer

Lewi

Cour

The BMW CCA Foundation Museum has unveiled a new exhibit called "Genesis: BMW from the beginning," at the BMW Car Club of America in Greer on Aug. 26. PHOTOS BY TIM KIMZEY

'WORKS OF ART'

BMW Car Club unveils 'Genesis' exhibit of early models

Robert Montgomery Herald-Journal
USA TODAY NETWORK - SOUTH CAROLINA

The deadly COVID-19 coronavirus has caused plenty of pain, heartache, and death since March.

But for the members of the BMW Car Club of America Foundation in Greer, it produced one blessing for its latest exhibit, according to operations director Neil Baer.

The owner of an extremely rare 1930 DA2 Cabriolet, Colleen Sheehan of Costa Mesa, Calif., had planned to show off her prized car at a summer wedding.

But the wedding was postponed due to COVID-19. So Sheehan allowed the car club to be among the 20 cars and four motorcycles showcased in the recently opened Genesis exhibit, toured as the most comprehensive collection of early BMWs ever seen in North America.

"It's fascinating to look at the cars," Baer said. "Stylistically, they're gorgeous - works of art. I find it fascinating that some are still in existence."

The 9,000-square-foot exhibition is in the club's home, just two miles east of BMW Plant Spartanburg and the BMW Performance Center at 190 Manatee Court along Highway 101 in Greer.

It's open 9 a.m. to 5 p.m. Monday through Friday and 10 a.m. to 4 p.m. Saturday. Admission is \$12 for adults; \$6 for children ages 6 to 17; and free for kids under 6. Facial masks are required, and social distancing is practiced.

Foundation chairman Bruce Hazard said Genesis was set to open in May, but the coronavirus had other plans.

"We think this is our most important exhibit," Hazard said. "It's just really unfortunate it happened this year, with everything locked down."

Jackie Jouret, the Foundation's passionate creative director and author of "Genesis: BMW from the Beginning," said the BMWs from 1927 to 1965 reflect a number of important 20th-century events.



The exhibit includes 20 historic BMW cars and 4 motorcycles from the 1920's through the 1960's. The oldest BMW in the United States, a 1930 DA2 Cabriolet, is on display.

See EXHIBIT, Page 3B

Lewis

Cour
priso
H
ute a
case
Th
Gene
need
lengi
cond
As
tiona
again
Circu
M
volve
turne

G
re
cl
to

Lillia
USA TO

A
club
broug
demi
El
ville i
close
sales
Th
the r
Monc
El
fime
while
growi
of th
Unity
tura
An
North
said.
"V
build
See R

able video.

"We work everyday doing good things out there, but it only takes one time, like you just saw, to create mistrust in the community," Lott said after showing the video to reporters.

her.

"You get a feel if someone's sincere or if they're just trying to get a job to say they got one and then quit a month later," Vandal said. "She was very sincere."

grabbed an old laptop and asked Vandal if she had a power cord and a place to plug it in.

For the next two hours, Williams pounded away on her laptop keyboard while Vandal came by between inter-

Exhibit

Continued from Page 1B

Featured are vintage photos dating to World War I when BMW of Germany emerged as a maker of advanced airplane engines through its expansion into motorcycle and automobile production during the 1920s.

The exhibit looks at BMW's motor-sport success of the 1930s, its role in supplying the German military during World War II, and its rebirth as a peacetime company in the 1950s through the 1960s.

Motorcycles include BMW Classic's R47 sportbike, "a beautiful, compelling machine," and a sidecar and trailer-equipped 1942 R75, Jouret said.

Among cars on exhibit are a 1951 EMW 340 that was built at BMW's former factory in Eisenach under Soviet control, and likely the only model of its kind in the U.S.; a 1957 507 roadster ordered new by Oscar Liebmann, BMW's first motorcycle dealer in the U.S.; and a 1960 700 rear-engine racer known as "the workman's Porsche," which continues to race today.

"As a BMW enthusiast, you've never seen the full continuum in one place," Jouret said. "Now you can see that in

one room."

Just as fascinating, as the history of BMW's engineering feats, are the ownership histories, Jouret said.

"The (1957 roadster) 507 was bought by Oskar Liebmann, who came to the U.S. in the 1920s as a machinist. He became BMW's first motorcycle dealer in the U.S. He had great connections in Germany. He drove it around, then brought it home. It was a one-owner car."

Many BMWs were also brought back to the U.S. from Germany by servicemen after World War II, she said.

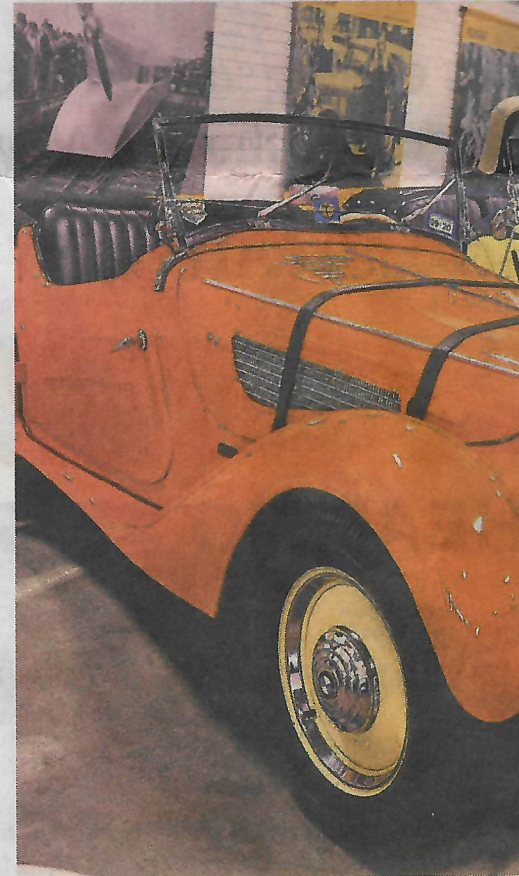
Years later, some were even found in junkyards, bought cheaply and beautifully restored, Baer said.

One owner, an orthopedic surgeon in Colorado, purchased a 1940 327/28 Cabriolet in 2001.

"He loves working with his hands and restored it by himself," Jouret said. "It's not inexpensive to restore a vintage car -- it takes a lot of dedication and work."

"There's so much love in these cars. People have really struggled to keep these things and alive so they didn't end up in the scrap heap."

• For more information and a preview of the exhibit, visit www.bmwcca.foundation.org, or call 864-329-1919.



The BMW CCA Foundation Museum has unveiled "BMW from the beginning," at the BMW Car Museum. The exhibit includes 20 historic BMW cars from the beginning through the 1960's, such as a 1936 319/1 Roadster.



PALMETTO MORTUARY

Where the Only Difference is the Price

• **CREMATIONS** •

starting at \$875

• **BURIALS** •

Including casket Starting at \$2,795

• **GREEN BURIALS** •

Including casket Starting at \$2395

TALK

Greenville

THE CITY MAGAZINE SINCE 2005

Fashion, food, home,
and fascinating people
in our community.

Subscribe at TALKGreenville.com



COFFEY'S

Our thoughts are
We are
as a way for you



Arrangements

Exhibit

Continued from Page 1B

Featured are vintage photos dating to World War I when BMW of Germany emerged as a maker of advanced airplane engines through its expansion into motorcycle and automobile production during the 1920s.

The exhibit looks at BMW's motor-sport success of the 1930s, its role in supplying the German military during World War II, and its rebirth as a peacetime company in the 1950s through the 1960s.

Motorcycles include BMW Classic's R47 sportbike, "a beautiful, compelling machine," and a sidecar and trailer-equipped 1942 R75, Jouret said.

Among cars on exhibit are a 1951 BMW 340 that was built at BMW's former factory in Eisenach under Soviet control, and likely the only model of its kind in the U.S.; a 1957 507 roadster ordered new by Oscar Liebmann, BMW's first motorcycle dealer in the U.S.; and a 1960 700 rear-engine racer known as "the workman's Porsche," which continues to race today.

"As a BMW enthusiast, you've never seen the full continuum in one place," Jouret said. "Now you can see that in

one room."

Just as fascinating, as the history of BMW's engineering feats, are the ownership histories, Jouret said.

"The (1957 roadster) 507 was bought by Oskar Liebmann, who came to the U.S. in the 1920s as a machinist. He became BMW's first motorcycle dealer in the U.S. He had great connections in Germany. He drove it around, then brought it home. It was a one-owner car."

Many BMWs were also brought back to the U.S. from Germany by servicemen after World War II, she said.

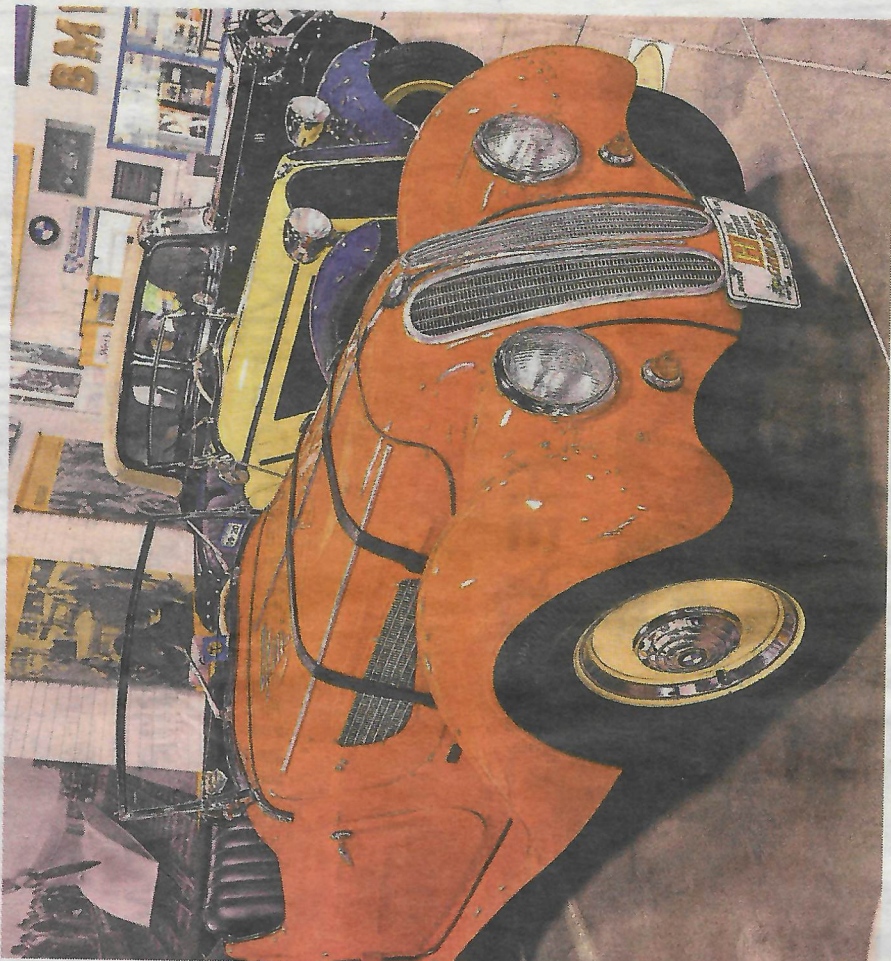
Years later, some were even found in junkyards, bought cheaply and beautifully restored, Baer said.

One owner, an orthopedic surgeon in Colorado, purchased a 1940 327/28 Cabriolet in 2001.

"He loves working with his hands and restored it by himself," Jouret said. "It's not inexpensive to restore a vintage car -- it takes a lot of dedication and work."

"There's so much love in these cars. People have really struggled to keep these things and alive so they didn't end up in the scrap heap."

• For more information and a preview of the exhibit, visit www.bmwcca.foundation.org, or call 864-329-1919.



The BMW CCA Foundation Museum has unveiled a new exhibit called "Genesis: BMW from the beginning," at the BMW Car Club of America in Greer on Aug. 26. The exhibit includes 20 historic BMW cars and 4 motorcycles from the 1920's through the 1960's, such as a 1936 319/1 Roadster. TIM KIMZEY



*Where the Only Difference
is the Price*

- CREMATIONS •
starting at \$875

TALK

Greenville

THE CITY MAGAZINE SINCE 2005

Fashion, food, home,
and fascinating people



CORONAVIRUS UPDATE:

Our thoughts are with the entire community in this difficult time.
We are offering ONLINE ARRANGEMENTS
as a way for you to pre-plan or handle an immediate need at